

Streamvault SV-350E

All-in-one security appliance

The Streamvault™ SV-350E all-in-one security appliance helps you move to a unified system combining video surveillance, access control, intrusion, and communications more efficiently. It offers RAID 5 for critical video data. The SV-350E combines all the capabilities you need to secure a small site in a single device, simplifying both installation and maintenance.

Guaranteed performance

up to
> **50**
cameras

up to
> **100**
readers

up to
> **32**
ALPR
cameras

up to
> **48TB**
storage



Key features

Turnkey appliance with Genetec™ Security Center pre-installed

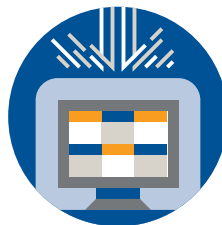
Local recording and monitoring of video, access control, and other security events

3-year hardware warranty with Genetec Assurance and 1-year advance replacement

Benefits



Speed up your deployment – Get your security system up and running quickly and efficiently with Security Center pre-installed and built-in wizard-based tools to configure your system.



Protect your security system – Streamvault appliances help you build a resilient security system that protects your data and operations. Our cyber security experts stay vigilant on evolving threats and help identify and address new vulnerabilities promptly.



Reduce your system's footprint – With Security Center and the SV-350E, you can consolidate video, access control, intrusion detection, and other security systems on a single device.

Applications

Retail

Standardize your processes across your entire chain. The Streamvault SV-350E appliance lets you record and monitor video locally, and makes it easy to connect remote sites with a centralized location.

Education

The Streamvault SV-350E series lets you monitor entries and exits with unified video and access control, so you can keep staff and students safe across your school.

Banking

Combine video, access control, and intrusion systems in a single platform and enhance security across your installations.

Technical specifications

OS

Windows 10 Enterprise LTSC

Processor

Intel® Xeon® E-2126G

Memory

Up to 64 GB DDR4 RAM

Ethernet

2x 1GbE RJ45 Ports

Peripherals

Rear: 2x USB 3.0

4x USB 2.0

Front: 1x USB 3.0

1x USB 2.0

Display

1x VGA

Mechanical and environmental

BTU

989 BTU/hr

Operating temperature

50°F to 95°F (10°C to 35°C)

Operating humidity

5 - 90% (non-condensing)

Certifications

Regulatory IEC 60950-1, European
Norm EN 60950-1, CISPR 22/CISPR 24,
EN55022/55024

Storage

Drive type

3x 3.5" SATA drives

OS drive

1x 256 GB M.2 SSD

Maximum data storage

48TB (raw); 29TB (usable)

Warranty

Hardware

3-year warranty with 1-year advance
replacement and next business day on-site
service
