

Streamvault SV-1000

Rackmount security appliance

The Streamvault™ SV-1000 is a cost-effective rackmount security appliance designed for mid-sized security systems. It helps you move to a unified security system combining video surveillance, access control, automatic license plate recognition, communications, intrusion and analytics in a single appliance.

Guaranteed performance

up to
> **200** Mbps
throughput

up to
> **2000**
readers

up to
> **75**
ALPR cameras

up to
> **40** TB
storage



Key features

Turnkey appliance with Genetec™ Security Center pre-installed

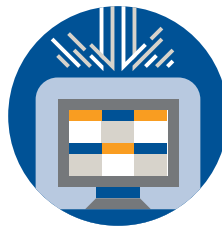
Enterprise SATA storage

3 year hardware warranty with next business day on-site service

Benefits



Get up and running faster – The Streamvault SV-1000 appliance accelerates new system deployment. With Security Center pre-loaded and guaranteed performance, you can move to unified security faster.



Protect your security system – Streamvault appliances help you build a resilient security system that protects your data and operations. Our cyber security experts stay vigilant on evolving threats and help identify and address new vulnerabilities promptly.



Simplified maintenance – The Streamvault SV-1000 is delivered with built-in tools to monitor system health and simplify updates. It reduces service calls and makes it easy to take full advantage of the latest Security Center capabilities.

Applications

Retail

The Streamvault SV-1000 lets you unify your video surveillance with point-of-sale systems, and provides a standardized turnkey solution for repeatable deployment across locations.

Education

Combine video surveillance, access control and intercoms in a single device with the Streamvault SV-1000. And with Security Center Mobile pre-loaded, you can access your cameras from anywhere.

Corporate security

Monitor entries and exits and review video surveillance videos from the same interface. The Streamvault SV-1000 is the perfect security appliance for office environments, allowing you to efficiently protect staff, visitors and assets.

Technical specifications

OS

Windows 10 Pro

Processor

1x Intel® Xeon® E5-2640v4 2.40 Ghz

Processor Passmark™

15,331

Memory

16 GB DDR4

Ethernet

On-board dual 1 Gb network adapter

Video output

1x VGA

Expansion

Up to 3x PCIe slots

Peripherals

3x USB 3.0

Mechanical and environmental

Power supply

2x 500W

Input power

100-240 VAC

Operating temperature

50°F to 95°F (10°C to 35°C)

Maximum BTU Rating

1,979 BTU/hr (100 VAC);
1,911 BTU/hr (200 VAC)

Operating humidity

8 - 90% (non-condensing)

Form factor

1U

Dimensions (WxDxH)

17.1" x 29.5" x 1.7"
(435mm x 747mm x 43mm)

Max weight

37 lbs (17.8 kg)

Certifications

CSA

Compliance standards

CISPR 22; EN55022; EN55024; FCC CFR 47, Pt 15; ICES-003; CNS13438; GB9254; K22;K24; EN 61000-3-2; EN 61000-3-3; EN 60950-1; IEC 60950-1

Storage

Drive type

3.5" Enterprise SATA drives

OS drive

2x 120GB M2 SSD (RAID 1)

Storage drive bays

4

Available drive sizes

8 TB, 10 TB

Data RAID level

RAID 5; RAID 1 also available

RAID Controller

2GB FWBC

Maximum data storage

40 TB (raw) 27.28 TB (usable)

Warranty

Hardware

3-year warranty with next business day on-site service



Genetec Inc.

genetec.com/locations

info@genetec.com

@genetec